

ORIENTATION VIEW  
FOR LOCATING  
COMPONENTS ONLY

DISCHARGE FLANGE  
3/8" PLATE

**CUSTOMER DATA**

AIR VOLUME  
FILTER AREA  
AIR/CLOTH RATIO  
PRODUCT  
TEMPERATURE  
DUST LOADING

**CONSTRUCTION**

MS (STANDARD)  
SS (DUST CONTACT)  
SS (GAS CONTACT)  
OTHER

**FILTER BAGS**

STANDARD 16 OZ. PE  
OTHER

**DISCHARGE FLANGE**

STANDARD 8"Ø  
OTHER

**OPTIONS & ORIENTATIONS**

- INLET BAFFLE
- TARGET PLATE
- DUTLET
- BIRDSCREEN
- CAP. ACCESS
- HOPPER PORT
- SUPPORT SADDLE
- SUPPORT STRUCT.
- PLATFORM
- LADDER
- FAN
- SLIDE GATE
- DRUM COVER KIT
- VIBRATOR
- ROTARY VALVE
- LEVEL INDICATOR
- POKE HOLE
- INTERIOR PAINT
- SUPPORT GRID
- EXPLOSION DOOR
- SCREW CONVEYOR
- INSULATION
- SPRINKLER
- SOLENOID BOX
- PULSE ON DEMAND
- PRESSURE SWITCH
- OTHER

NO. OF BAGS	BAG LGH (IN)	FILTER AREA (SQ. FT.)	NO. VALVES	100 PSI COMP. AIR SIZE (SCFH)	EST. WEIGHT (LBS.)	INLET SIZE (IN)	DUTLET SIZE (IN)	GENERAL DIMENSIONS				
								A	B	C	D	E
BW 9	36	39	3	4.0	583	3"Ø	3"Ø	3'-6"	3'-0"			7'-8"
	58	65		4.5	742	THRU	THRU	5'-4"	4'-10"			11'-4"
	84	95		5.0	902	6"Ø	6"Ø	7'-6"	7'-0"			15'-8"
BW 16	36	68	4	5.5	1050	5"Ø	5"Ø	8'-10"	8'-4"			18'-4"
	58	115		5.9	1020	THRU	THRU	5'-4"	4'-10"			11'-11"
	84	170		6.2	1236	8"Ø	8"Ø	7'-6"	7'-0"			16'-3"
BW 25	100	203	5	6.4	1400	7"Ø	7"Ø	8'-10"	8'-4"			18'-11"
	58	180		6.8	1163	THRU	THRU	5'-4"	4'-10"			12'-6"
	84	285		7.5	1428	THRU	THRU	7'-6"	7'-0"			16'-10"
BW 36	100	317	6	7.8	1893	11"Ø	11"Ø	8'-10"	8'-4"			19'-6"
	58	239		8.2	1661	9"Ø	9"Ø	5'-4"	4'-10"			13'-1"
	84	382		8.4	2043	THRU	THRU	7'-6"	7'-0"			17'-5"
	100	457		8.8	2318	12"Ø	12"Ø	8'-10"	8'-4"			20'-1"

**SHOP NOTES**

- 1) DESIGN PRESSURE UP TO +/- 20" W.G.
- 2) SHOP PAINT: ALL EXTERIOR MS SURFACES ONE COAT OF DIRECT-TO-METAL ENAMEL, SERIES 55, COLOR (SW655V101SHG) ULTRA GRAY @ 1-1 1/2 MILS D.F.T.
- 3) AIR HEADER IS ALWAYS LOCATED AT 0 DEGREES.
- 4) CLEAN AIR DUTLET CANNOT BE AT 0 DEGREES.
- 5) A NEMA 4 TIMER AND SOLENOID BOX ASSEMBLY IS SUPPLIED. THE SOLENOID VALVES ARE PREWIRED TO THEIR RESPECTIVE TIMER DUTPUT TERMINALS. THE SOLENOID PORT IS PRE-CONNECTED TO ITS RESPECTIVE DIAPHRAGM VALVE RELIEF PORT USING POLY-FLOW TUBING.
- 6) ALL UNITS WITH 58" & 84" FILTER BAGS WILL HAVE 20" X 36" HINGED ACCESS DOORS. ALL UNITS WITH 100" FILTER BAGS WILL HAVE 20" X 44" HINGED ACCESS DOORS. MODEL BB-9-36 WILL HAVE A 20" X 24" HINGED ACCESS DOOR. MODEL BB-4-36 WILL HAVE A 16" X 24" BOLTED ACCESS DOOR. MODELS BB-4-58 AND BB-4-84 WILL HAVE A 16" X 36" BOLTED ACCESS DOOR.
- 7) BB-36 & BB-25-100 D.A.P.'S WILL HAVE VERTICAL STIFFENERS.
- 8) NO HORIZONTAL STIFFENERS WILL BE USED ON THE HOPPERS.
- 9) UNITS WITH LEGS WILL HAVE SADDLES.
- 10) GENERAL ARRANGEMENT IS TO BE USED FOR REFERENCE ONLY AND NOT FOR CONSTRUCTION UNLESS CERTIFIED BY CUSTOMER.

REV.	DESCRIPTION	DATE BY

**TOLERANCES**

UNLESS OTHERWISE SPECIFIED, ALL DIMENSIONS ARE IN FEET & INCHES.

FRACTIONAL	ANGULAR
± 1/8"	± .5°

THIS MATERIAL IS THE SOLE PROPERTY OF ULTRA INDUSTRIES INC. AND SHALL NOT BE REPRODUCED, PUBLISHED OR DISCLOSED TO ANYONE WITHOUT OBTAINING THE WRITTEN AUTHORIZATION OF ULTRA INDUSTRIES INC.

NO BACKCHARGES FOR FIELD RELATED WORK OF ANY KIND WILL BE ACCEPTED UNLESS FIRST REQUESTED AND AGREED TO WITH WRITTEN AUTHORIZATION FROM ULTRA INDUSTRIES INC.



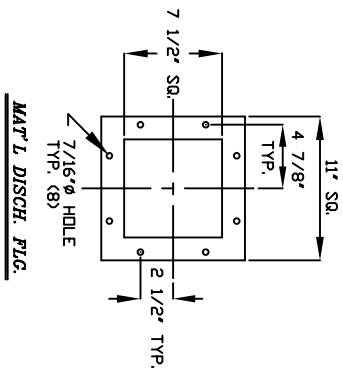
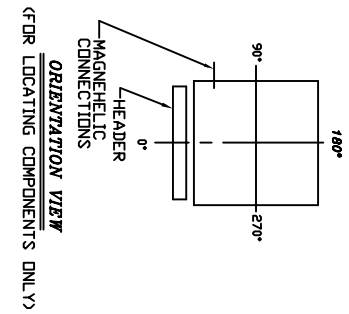
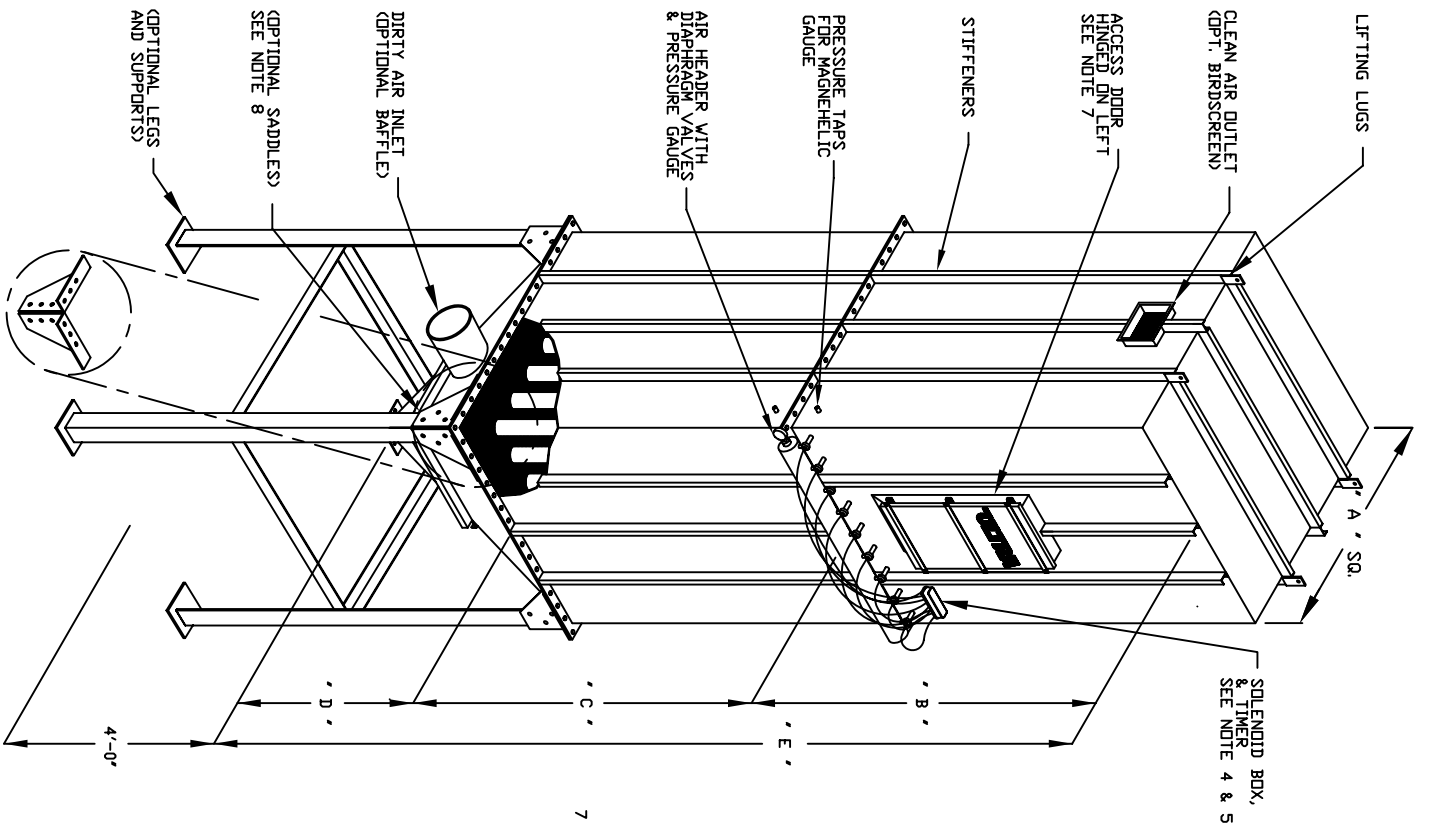
**ULTRA INDUSTRIES, INC.**  
1908 DEKOVEN AVE. RACINE, WISCONSIN 53403  
PHONE: 414/633-5070 FAX: 414/633-5102

FOR SPARE PARTS, CALL: 1-800-35ULTRA

SCALE: N.T.S.	SERIAL NO.:	DRAWN BY: MLD
DATE: 1-99	ARRANGEMENT III	APPROVED BY:

**GENERAL ARRANGEMENT**

MODEL: BB-4 --- BB-36 COLLECTORS	DRAWING NUMBER: BB4-36 III	REV.: 0
BOTTOM BAG REMOVAL		



### OPTIONS AND ORIENTATIONS

NO. OF BAGS	BAG LENGTH (IN)	FILTER AREA (SQ. FT.)	NO. OF VALVES	SCFM OF AIR @ 100 PSI	WEIGHT (LBS.)	INLET SIZES (IN)	OUTLET SIZES (IN)	GENERAL DIMENSIONS						
								A	B	C	D	E		
BW 49	84	539	7	9.8	1810	10"	10"	7'-6"	7'-0"	7'-0"	18'-0"			
BW 64	100	641	7	10.5	1930	10"	13"	8'-10"	8'-4"	8'-4"	20'-8"			
BW 81	120	770	7	11.2	2080	13"	13"	10'-6"	10'-0"	10'-0"	24'-0"			
BW 100	84	704	8	12.0	2280	11"	11"	7'-6"	7'-0"	7'-0"	18'-7"			
BW 121	100	838	8	12.8	2410	11"	15"	8'-10"	8'-4"	8'-4"	21'-3"			
BW 81	120	1005	8	13.1	2572	15"	15"	10'-6"	10'-0"	10'-0"	24'-7"			
BW 100	84	891	9	13.5	3750	14"	12" X 12"	7'-6"	7'-0"	7'-0"	19'-2"			
BW 121	100	1060	9	14.0	3970	14"	12" X 15"	8'-10"	8'-4"	8'-4"	21'-10"			
BW 49	120	1272	10	14.5	4190	17"	12" X 18"	10'-6"	10'-0"	10'-0"	25'-2"			
BW 64	84	1100	10	15.0	4420	16"	12" X 16"	7'-6"	7'-0"	7'-0"	19'-9"			
BW 81	100	1309	10	15.5	4690	19"	12" X 18"	8'-10"	8'-4"	8'-4"	22'-5"			
BW 100	120	1571	10	16.0	4930	19"	12" X 21"	10'-6"	10'-0"	10'-0"	25'-9"			
BW 121	84	1330	11	17.0	5570	17"	12" X 18"	7'-6"	7'-0"	7'-0"	20'-4"			
BW 49	100	1584	11	17.5	5820	17"	12" X 21"	8'-10"	8'-4"	8'-4"	23'-0"			
BW 64	120	1901	11	18.0	6100	21"	12" X 27"	10'-6"	10'-0"	10'-0"	26'-4"			

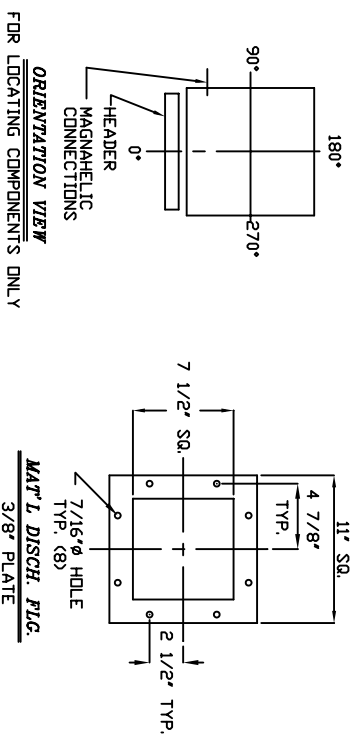
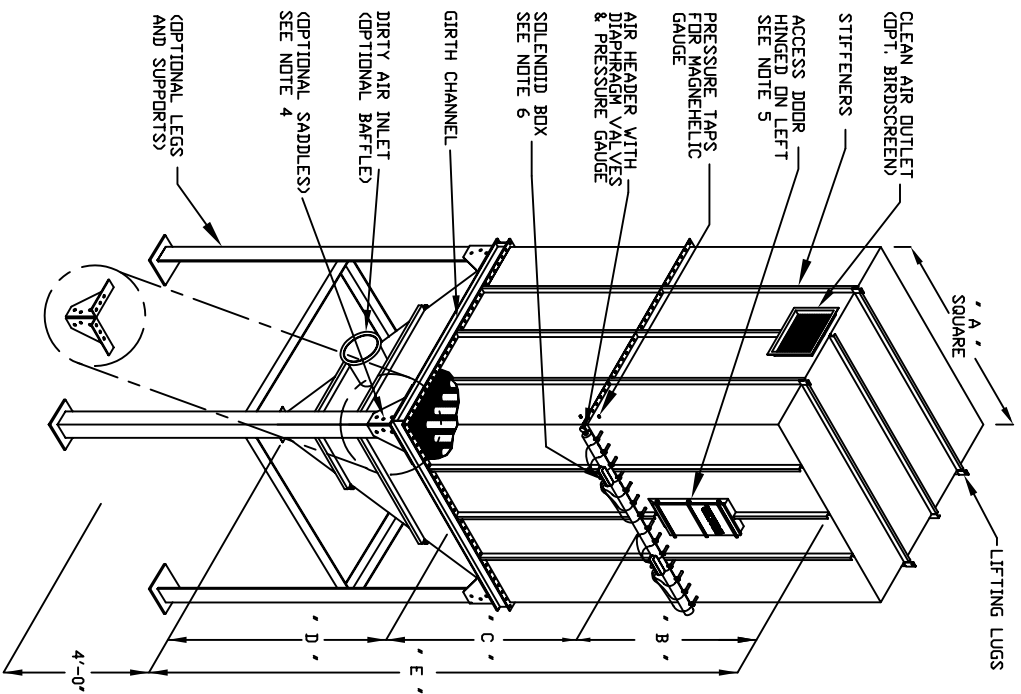
INLET	OUTLET	ACCESS DOOR	HOPPER ACCESS	LEGS	PLATFORM	LADDER	WEATHERHOOD	FAN	SLIDE GATE	VIBRATOR	ROTARY VALVE	BINDICATOR	POKE HOLE	INTERIOR PAINT
*	*	*	*	*	*	*	*	*	*	*	*	*	*	*

#### NOTES:

- 1) DESIGN PRESSURE UP TO +/- 20" W.G.
- 2) SHOP PAINT IS ONE COAT OF DIRECT-TO-METAL ENAMEL, SERIES 55, COLOR (SYB55W101SHG) ULTRA GRAY @ 1-1/2 MILS D.F.T., EXT. SURFACES.
- 3) AIR HEADER IS ALWAYS LOCATED AT 0 DEGREES.
- 4) A NEMA 4 SOLENOID BOX IS SUPPLIED. THE SOLENOID VALVES ARE PRE-WIRED TO THEIR RESPECTIVE TIMER OUTPUT TERMINALS. THE SOLENOID PORT IS PRE-CONNECTED TO ITS RESPECTIVE DIAPHRAGM VALVE RELIEF PORT USING POLY-FLOW TUBING. (UNITS BB-81 THRU BB-121 ONLY).
- 5) A TIMER & NEMA 4 TIMER BOX IS SUPPLIED AND SHIPPED LOOSE FOR FIELD LOCATING AND MTG. THE TIMER BOX REQUIRES 1 PH / 60 HZ / 115 VOLT ELECTRICAL CONNECTION. (UNITS BB-81 THRU BB-121 ONLY).
- 6) UNITS (BB-49 & BB-64) WILL HAVE A NEMA 4 TIMER AND SOLENOID BOX ASSEMBLY.
- 7) ALL UNITS WILL HAVE 20" X 44" HINGED ACCESS DOORS.
- 8) SADDLE SUPPORTS ARE USED ON ALL MODELS WITH LEGS.
- 9) ALL COLLECTORS INCLUDE A FLUSH BOLTED HOPPER DOOR & BAG CATCH GRID.

REV.	DESCRIPTION	DATE

UPDATED:	9/17/98	SERIAL:	ARRANGEMENT III	APPROVED BY:	MLD
CUSTOMER:	GENERAL DIMENSIONS				
MODEL:	BW 49 - 121 III	DRAWING NUMBER:	BW-49-121 III	REV.:	0
<b>ULTRA</b> ULTRA INDUSTRIES, INC. 1908 DE KOVEN AVE. PHONE: 414-633-5070 FAX: 414-633-5172 RACINE, WI 53403					



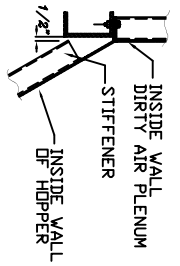
NO. OF BAGS	BAG LENGTH (IN)	FILTER AREA (SQ. FT.)	NO. OF VALVES	SCFM OF AIR @ 100 PSI	WEIGHT (LBS.)	INLET DIA. (IN)	GENERAL DIMENSIONS				
							A	B	C	D	E
BW 144	84	1583	12	18.0	6210	17"	20' X 26'	7'-6"	7'-0"	7'-0"	20'-11"
BW 144	100	1885	12	18.6	6650	17"	20' X 26'	8'-10"	8'-4"	8'-4"	23'-7"
BW 169	120	2262	13	19.2	7090	22"	24' X 36'	10'-6"	10'-0"	10'-0"	26'-11"
BW 169	84	1858	13	19.0	6990	18"	24' X 36'	7'-6"	7'-0"	7'-0"	22'-0"
BW 196	100	2212	14	19.6	7480	18"	24' X 36'	8'-10"	8'-4"	8'-4"	24'-8"
BW 196	120	2655	14	20.0	7970	24"	24' X 36'	10'-6"	10'-0"	10'-0"	28'-0"
BW 225	84	2155	15	21.6	7650	20"	24' X 26'	7'-6"	7'-0"	7'-0"	22'-7"
BW 225	100	2566	15	22.2	8170	26"	24' X 30'	8'-10"	8'-4"	8'-4"	25'-3"
BW 256	120	3079	16	24.8	9950	28"	24' X 36'	10'-6"	10'-0"	10'-0"	28'-7"
BW 256	84	2815	16	25.0	9740	26"	26' X 40'	7'-6"	7'-0"	7'-0"	23'-9"
BW 256	100	3351	16	26.1	10200	26"	26' X 42'	8'-10"	8'-4"	8'-4"	26'-5"
BW 256	120	4021	16	27.0	11300	33"	26' X 44'	10'-6"	10'-0"	10'-0"	29'-0"

**OPTIONS AND ORIENTATIONS**

INLET	*	PLATFORM	*	VIBRATOR	*
OUTLET	*	LADDER	*	ROTARY VALVE	*
ACCESS DOOR	*	WEATHERHOOD	*	BINDICATOR	*
HOPPER ACCESS	*	FAN	*	POKE HOLE	*
LEGS	*	SLIDE GATE	*	INTERIOR PAINT	*

**NOTES:**

- DESIGN PRESSURE UP TO +/- 20" W.G.
- SHOP PAINT IS ONE COAT OF DIRECT-TO-METAL ENAMEL, SERIES 55, COLOR (SW755V101SHG) ULTRA GRAY @ 1-1 1/2 MILS D.F.T., EXT. SURFACES.
- AIR HEADER IS ALWAYS LOCATED AT 0 DEGREES.
- UNITS WITH LEGS WILL HAVE SADDLE SUPPORTS. UNIT (GB8-256) WILL HAVE GIRTH CHANNEL SUPPORTS.
- ALL UNITS WILL HAVE 20' X 44' ACCESS DOORS.
- A NEMA 4 SOLENOID BOX IS SUPPLIED. THE SOLENOID VALVES ARE PREWIRED TO THEIR RESPECTIVE TIMER OUTPUT TERMINALS. THE SOLENOID PORT IS PRE-CONNECTED TO ITS RESPECTIVE DIAPHRAGM VALVE RELIEF PORT USING POLY-FLOW TUBING.
- A TIMER & NEMA 4 TIMER BOX IS SUPPLIED AND SHIPPED LOOSE FOR FIELD LOCATING AND MTG. THE TIMER BOX REQUIRES 1 PH / 60 HZ / 115 VOLT ELECTRICAL CONNECTION.
- ALL COLLECTORS INCLUDE A FLUSH BOLTED HOPPER DOOR AND A BAG CATCH GRID.



FORWARD GIRTH CHANNEL  
3" X 8" X 1/4"

REV.	DESCRIPTION	DATE BY
4/29/97	ARRANGEMENT III	MLD
<b>ULTRA INDUSTRIES, INC.</b> 1908 DE KOVEN AVE. RACINE, WI 53403 PHONE: 414-633-5070 FAX: 414-633-5172		
UPDATED	SERIAL	APPROVED BY
4/29/97	ARRANGEMENT III	MLD
<b>GENERAL DIMENSIONS</b>		
MODEL	DRAWING NUMBER	REV.
BW 144 - 256 III	BW-144-256 III	0
<b>TOP BAG REMOVAL</b>		