

ORIENTATION VIEW FOR LOCATING COMPONENTS ONLY

NO. OF BAGS	BAG LENGTH (IN)	FILTER AREA (SQ. FT.)	NO. OF VALVES	SCFM OF AIR 100 PSI	WEIGHT (LBS.)	DUTILET DIA. (IN)	GENERAL DIMENSIONS			
							A	B	C	D
BD 9	58	68	3	4.5	529	7"	4'-10"			7'-5"
	84	99		5.0	611	THRU	2'-0"			9'-7"
	100	118		5.5	658	11"	8'-4"			10'-11"
BD 25	58	190	5	5.8	1066	7"	4'-10"			8'-7"
	84	275		7.5	1199	THRU	3'-4"			10'-9"
	100	327		7.8	1463	11"	8'-4"			12'-1"
BD 36	58	273	6	8.2	1485	9"	4'-10"			9'-2"
	84	396		8.4	1679	THRU	4'-0"			11'-4"
	100	471		8.8	1799	12"	8'-4"			12'-8"

OPTIONS AND ORIENTATIONS

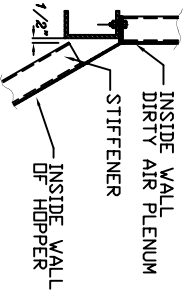
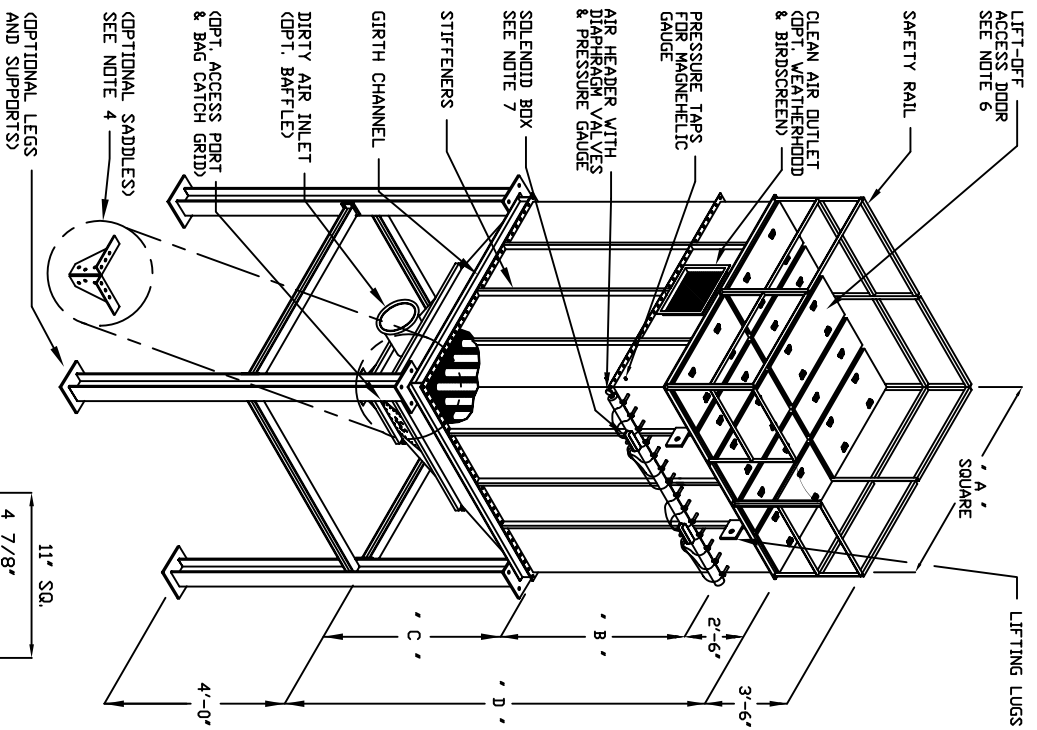
INLET	PLATFORM	VIBRATOR
OUTLET	LADDER	ROTARY VALVE
ACCESS PORT	WEATHERHOOD	BINDICATOR
HOPPER ACCESS	FAN	POKE HOLE
LEGS	SLIDE GATE	INTERIOR PAINT

NOTES:

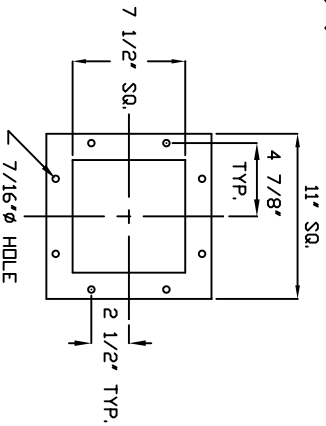
- 1) DESIGN PRESSURE UP TO +/- 20" W.G.
- 2) SHOP PAINT IS ONE COAT OF DIRECT-TO-METAL ENAMEL, SERIES 55, COLOR (SWB55W101SHG) ULTRA GRAY @ 1-1.5 MILS D.F.T., EXT. SURFACES.
- 3) AIR HEADER IS ALWAYS LOCATED AT 0 DEGREES.
- 4) CLEAN AIR OUTLET CANNOT BE AT 0 DEGREES.
- 5) A NEMA 4 TIMER AND SOLENOID BOX ASSEMBLY IS SUPPLIED. THE SOLENOID VALVES ARE PREWIRED TO THEIR RESPECTIVE TIMER OUTPUT TERMINALS. THE SOLENOID PORT IS PRE-CONNECTED TO ITS RESPECTIVE DIAPHRAGM VALVE RELIEF PORT USING POLY-FLO TUBING.
- 6) ALL UNITS WILL HAVE LIFT-OFF DOORS FOR BAG CHANGING.
- 7) STIFFENERS WILL ONLY BE USED ON BB-25-100 UNITS AND ALL BB-36 UNITS.
- 8) UNITS WITH LEGS WILL HAVE SADDLES.
- 9) NO STIFFENERS WILL BE USED ON THE HOPPERS.

MAT'L DISCH. FLG.
3/8" PLATE
180°

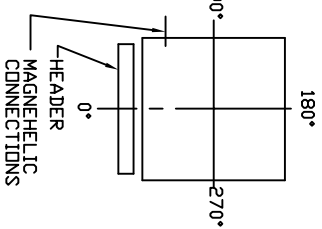
REV.	DESCRIPTION	DATE BY
2-11-98	ARRANGEMENT III	M.L.D.
<p>ULTRA INDUSTRIES, INC. 1908 DE KOVEN AVE. RACINE, WI 53403 PHONE: 414-633-5070 FAX: 414-633-5172</p>		
<p>GENERAL DIMENSIONS</p>		
MODEL	BREAWING NUMBER	REV.
BD 25-36 III	BD-25-36 III	0



FORMED GIRTH CHANNEL
3" X 8" X 1/4"



MAT'L DISCH. PLG.
3/8" PLATE



ORIENTATION VIEW
FOR LOCATING COMPONENTS ONLY

NO. OF BAGS	BAG LENGTH (IN)	FILTER AREA (SQ. FT.)	NO. OF VALVES	SCFM OF AIR @ 100 PSI	WEIGHT LBS.	OUTLET SIZES (IN)	GENERAL DIMENSIONS			
							A	B	C	D
BD 144	84	1583	12	18.0	5693	20" X 26"	7'-0"	7'-0"	6'-5"	15'-11"
	100	1885		18.6	5991	20" X 26"	8'-0"	8'-4"	17'-3"	17'-3"
	120	2262		19.2	6364	24" X 36"	10'-0"	10'-0"	18'-11"	18'-11"
BD 169	84	1858	13	19.0	6346	24" X 36"	7'-0"	7'-0"	7'-6"	17'-0"
	100	2212		19.6	6660	24" X 36"	8'-4"	8'-4"	18'-4"	18'-4"
	120	2655		20.0	7053	24" X 32"	10'-0"	10'-0"	20'-0"	20'-0"
BD 196	84	2155	14	21.6	7198	24" X 26"	7'-0"	7'-0"	7'-1"	17'-7"
	100	2566		22.2	7550	24" X 30"	8'-4"	8'-4"	18'-11"	18'-11"
	120	3079		22.8	7990	24" X 36"	10'-0"	10'-0"	20'-7"	20'-7"
BD 225	84	2474	15	23.2	7856	24" X 30"	7'-0"	7'-0"	8'-8"	18'-2"
	100	2945		24.0	8225	26" X 36"	10'-8"	8'-4"	19'-6"	19'-6"
	120	3534		24.8	8685	26" X 36"	10'-0"	10'-0"	21'-2"	21'-2"
BD 256	84	2815	16	25.0	8344	26" X 40"	7'-0"	7'-0"	18'-9"	18'-9"
	100	3351		26.1	8729	26" X 42"	8'-4"	8'-4"	20'-1"	20'-1"
	120	4021		27.0	9210	26" X 44"	11'-4"	9'-3"	21'-9"	21'-9"

OPTIONS AND ORIENTATIONS

INLET	OUTLET	ACCESS PORT	HOPPER ACCESS	LEGS	PLATFORM	LADDER	WEATHERHOOD	FAN	SLIDE GATE	VIBRATOR	ROTARY VALVE	BINDICATOR	POKE HOLE	INTERIOR PAINT
*	*	*	*	*	*	*	*	*	*	*	*	*	*	*

NOTES

- 1) DESIGN PRESSURE UP TO +/- 20" W.G.
- 2) SHOP PAINT IS ONE COAT OF DIRECT-TO-METAL ENAMEL, SERIES 55, COLOR (SYSSW1015)D ULTRA GRAY @ 1-1/2 MILS DFT., EXT. SURFACES.
- 3) AIR HEADER IS ALWAYS LOCATED AT 0 DEGREES.
- 4) CLEAN AIR OUTLET CANNOT BE AT 0 DEGREES.
- 5) ALL UNITS WILL HAVE LIFT-OFF ACCESS DOORS.
- 6) A NEMA 4 SOLENOID BOX IS SUPPLIED. THE SOLENOID VALVES ARE PRE-WIRED TO THEIR RESPECTIVE TIMER OUTPUT TERMINALS. THE SOLENOID PORT IS PRE-CONNECTED TO ITS RESPECTIVE DIAPHRAGM VALVE RELIEF PORT USING POLY-FIBD TUBING.
- 7) A TIMER & NEMA 4 TIMER BOX IS SUPPLIED AND SHIPPED LOOSE FOR FIELD LOCATING AND WTG. THE TIMER BOX REQUIRES 1 PH/60 HZ/115 VOLT ELECTRICAL CONNECTION.
- 8) UNITS WITH LEGS WILL HAVE GIRTH CHANNEL SUPPORTS.
- 9) UNITS WITH LEGS WILL HAVE SADDLE SUPPORTS.

REV.	DESCRIPTION	DATE BY



ULTRA INDUSTRIES, INC.
1908 DE KOVEN AVE.
RACINE, WI 53403
PHONE: 414-633-5070 FAX: 414-633-5172

UPDATED:	ARRANGEMENT	DRAWN BY:	APPROVED BY:
2-12-98	III	MLD	

GENERAL DIMENSIONS

MODEL	DRAWING NUMBER	REV.
BD 144 - 256 III TOP BAG REMOVAL	BD-144-256 III	0