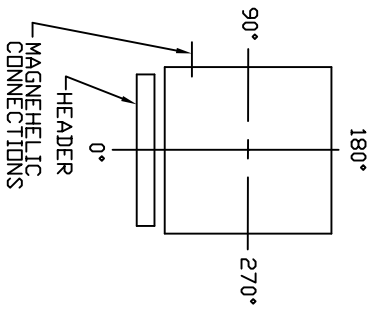


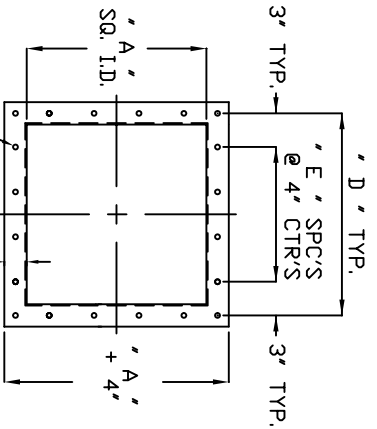
OPTIONS / ORIENTATIONS

OUTLET	*
WEATHERHOOD	*
ACCESS PORT	*
FAN	*
INTERIOR PAINT	*

NO. OF BAGS	BAG LENGTH (IN)	FILTER AREA (SQ. FT.)	NO. OF VALVES	SCFM OF COMP. AIR 100 PSI	WEIGHT (LBS.)	OUTLET DIA. (IN)	GENERAL DIMENSIONS							
							A	B	C	D	E	F		
BD 25	58	190	5	5.8	880	7"	5'-4"	6'-9"	3'-6"	9	52	3'-6"	9	52
	84	275		7.5	1020	THRU	7'-6"	8'-11"						
	100	327		7.8	1150	11"	8'-10"	10'-3"						
BD 36	58	273	6	8.2	1130	9"	5'-4"	6'-9"	4'-0"	11	60	4'-2"	11	60
	84	396		8.4	1300	THRU	7'-6"	8'-11"						
	100	471		8.8	1470	12"	8'-10"	10'-3"						



ORIENTATION VIEW
FOR LOCATING COMPONENTS ONLY

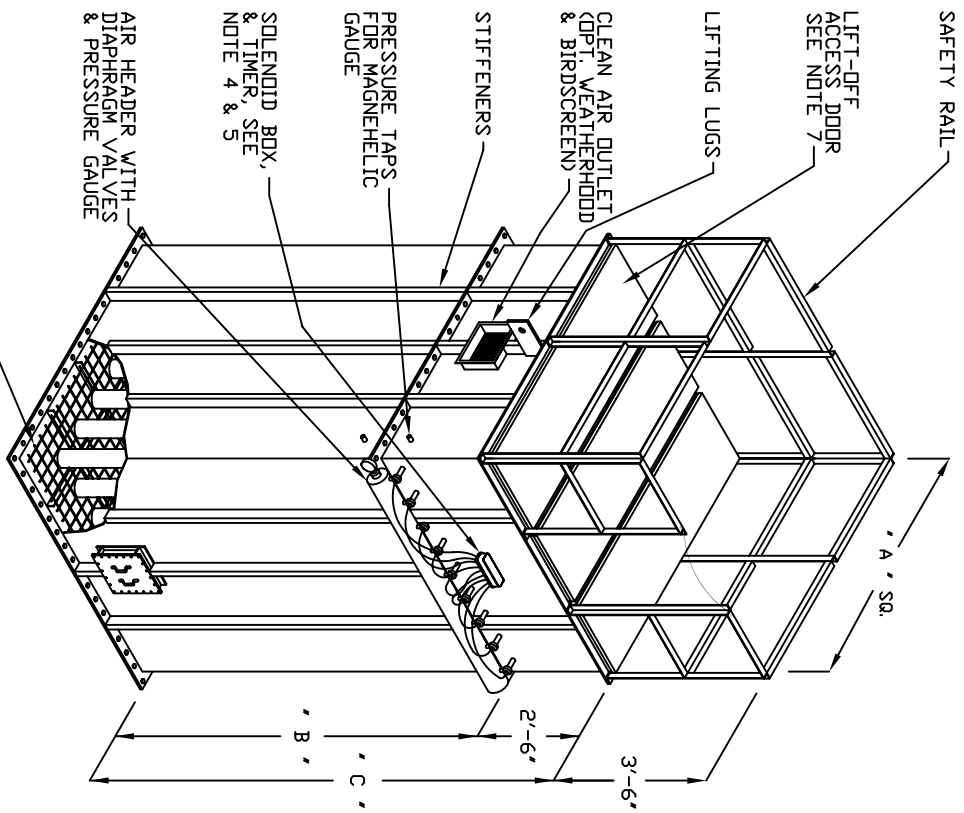


BASE FLANGE DETAIL

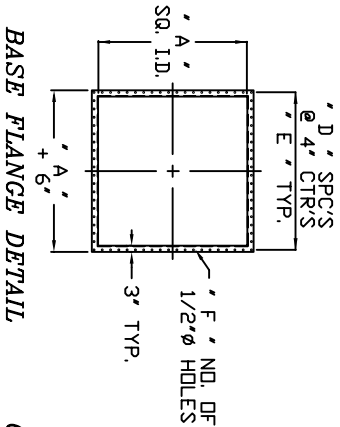
NOTES:

- 1) DESIGN PRESSURE UP TO +/- 20" W.G.
- 2) SHOP PAINT IS ONE COAT OF DIRECT-TO-METAL ENAMEL, SERIES 55, COLOR (S/WB55W101SHG) ULTRA GRAY @ 1-1.5 MILS D.F.T., EXT. SURFACES.
- 3) AIR HEADER IS ALWAYS LOCATED AT 0 DEGREES.
- 4) CLEAN AIR OUTLET CANNOT BE AT 0 DEGREES.
- 5) A NEMA 4 TIMER AND SOLENOID BOX ASSEMBLY IS SUPPLIED. THE SOLENOID VALVES ARE PREWIRED TO THEIR RESPECTIVE TIMER OUTPUT TERMINALS. THE SOLENOID PORT IS PRE-CONNECTED TO ITS RESPECTIVE DIAPHRAGM VALVE RELIEF PORT USING POLY-FLO TUBING.
- 6) ALL UNITS WILL HAVE LIFT-OFF DOORS FOR BAG CHANGING.
- 7) STIFFENERS WILL ONLY BE USED ON BB-25-100 UNITS AND ALL BB-36 UNITS.

REV.	DESCRIPTION	DATE BY
ULTRA		
ULTRA INDUSTRIES, INC. 1908 DE KOVEN AVE. RACINE, WI 53403 PHONE: 414-633-5070 FAX: 414-633-5172		
UPDATED: 7/28/98	SERIAL: ARRANGEMENT II	APPROVED BY: MLD
GENERAL DIMENSIONS		
MODEL: BD 25-36 II	DRAWING NUMBER: BD-25-36 II	REV.: 0
TOP BAG REMOVAL		



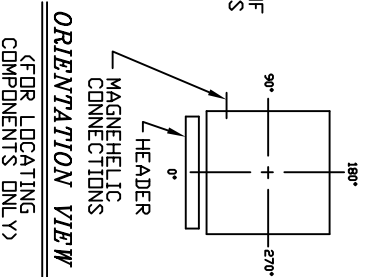
OPTIONS & ORIENTATIONS	
ACCESS PORT	*
OUTLET	*
WEATHERHOOD	*
FAN	*
PLATFORM	*
LADDER	*
INTERIOR PAINT	*



NO. OF BAGS	BAG LENGTH (IN)	FILTER AREA (SQ. FT.)	NO. OF VALVES	SCFM OF AIR @ 100 PSI	WEIGHT (LBS.)	GENERAL DIMENSIONS						
						OUTLET SIZES (IN)	A	B	C	D	E	F
BD 49	84	539	7	9.8	1760	10"	7'-0"	9'-6"				
	100	641		10.5	1870	THRU	4'-8"	8'-4"	10'-10"	15	5'-0"	60
BD 64	84	704	8	11.2	1990	13"	10'-0"	12'-6"				
	100	838		12.0	2170	11"	7'-0"	9'-6"				
BD 81	84	891	9	12.8	2320	THRU	5'-4"	10'-10"	17	5'-8"	68	
	100	1060		13.1	2490	15"	8'-4"	10'-10"	12'-6"			
BD 100	84	1100	10	13.5	3420	12" X 12"	7'-0"	9'-6"				
	100	1309		14.0	3640	12" X 15"	6'-0"	8'-4"	10'-10"	19	6'-4"	76
BD 121	84	1330	11	14.5	3860	12" X 18"	10'-0"	12'-6"				
	100	1571		15.0	3419	12" X 16"	7'-0"	9'-6"				
BD 121	84	1330	11	15.5	3647	12" X 18"	8'-4"	10'-10"	21	7'-0"	84	
	100	1584		16.0	3932	12" X 21"	10'-0"	12'-6"				
BD 121	84	1330	11	17.0	3845	12" X 18"	7'-0"	9'-6"				
	100	1584		17.5	4089	12" X 21"	8'-4"	10'-10"	23	7'-8"	92	
BD 121	84	1330	11	18.0	4394	12" X 27"	10'-0"	12'-6"				
	100	1584		18.0	4394	12" X 27"	10'-0"	12'-6"				

NOTES:

- DESIGN PRESSURE UP TO +/- 20" W.G.
- SHOP PAINT IS ONE COAT OF DIRECT-TO-METAL ENAMEL, SERIES 55, COLOR (SWB55W1015HG) ULTRA GRAY @ 1-1 1/2 MILS D.F.T., EXT. SURFACES.
- AIR HEADER IS ALWAYS LOCATED AT 0 DEGREES.
- A NEMA 4 SOLENOID BOX IS SUPPLIED. THE SOLENOID VALVES ARE PRE-WIRED TO THEIR RESPECTIVE TIMER OUTPUT TERMINALS. THE SOLENOID PORT IS PRE-CONNECTED TO ITS RESPECTIVE DIAPHRAGM VALVE RELIEF PORT USING POLY-FLOW TUBING. (UNITS BB-81 THRU BB-121 DNLY).
- A TIMER & NEMA 4 TIMER BOX IS SUPPLIED AND SHIPPED LOOSE FOR FIELD LOCATING AND WTG. THE TIMER BOX REQUIRES 1 PH / 60 HZ / 115 VOLT ELECTRICAL CONNECTION. (UNITS BB-81 THRU BB-121 DNLY).
- UNITS (BB-49 & BB-64) WILL HAVE A NEMA 4 TIMER AND SOLENOID BOX ASSY.
- ALL UNITS WILL HAVE LIFT-OFF ACCESS DOORS.

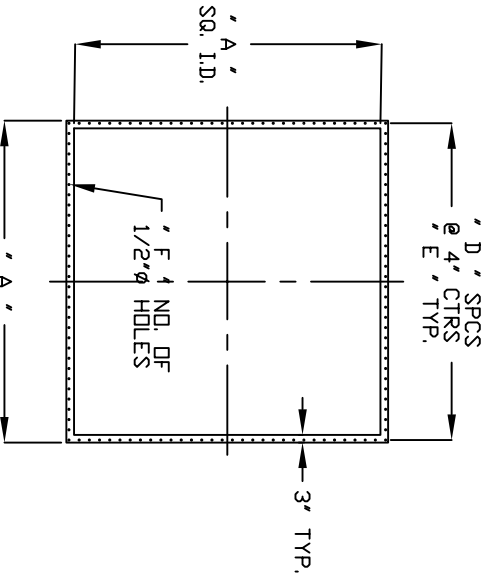
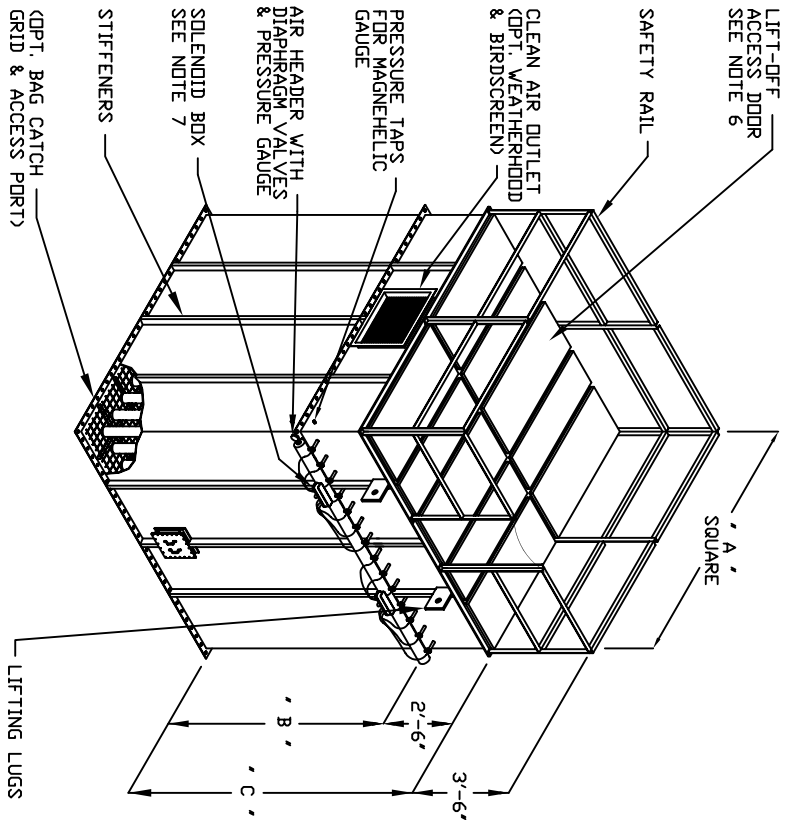


ORIENTATION VIEW

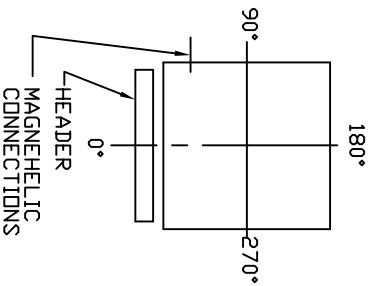
(FOR LOCATING COMPONENTS DNLY)

REV.	DESCRIPTION	DATE BY
0	BD 49 - 121 II TOP BAG REMOVAL	

MODEL	BD 49 - 121 II	DRAWING NUMBER	BD-49-121 II	REV.	0
CUSTOMER	GENERAL DIMENSIONS				
UPDATED	9/17/98	SERIAL	ARRANGEMENT II	APPROVED BY	MLD
ULTRA INDUSTRIES, INC. 1908 DE KOVEN AVE RACINE, WI 53403 PHONE: 414-633-5070 FAX: 414-633-5172					



BASE FLANGE DETAIL



ORIENTATION VIEW FOR LOCATING COMPONENTS ONLY

OPTIONS & ORIENTATIONS
OUTLET ACCESS PORT
INTERIOR PAINT
WEATHERHOOD PLATFORM
LADDER
FAN

NO. OF BAGS	BAG LENGTH (IN)	FILTER AREA (SQ. FT.)	NO. OF VALVES	SCFM OF COMP. AIR @ 100 PSI	WEIGHT (LBS.)	OUTLET SIZES (IN)	GENERAL DIMENSIONS					
							A	B	C	D	E	F
BD 144	84	1583	12	18.0	5660	20" X 26"	8'-0"	7'-10"	10'-4"	25	8'-4"	100
BD 169	100	1885	13	19.6	6100	20" X 26"	9'-4"	9'-2"	11'-8"	29	9'-8"	116
BD 196	120	2262	14	19.0	6540	24" X 36"	10'-0"	7'-10"	13'-4"	31	10'-4"	124
BD 225	84	1858	15	21.6	6700	24" X 26"	10'-8"	7'-10"	10'-4"	33	11'-0"	132
BD 256	100	2945	16	22.2	7220	24" X 30"	11'-4"	9'-2"	11'-8"	35	11'-8"	140

NOTES:

- DESIGN PRESSURE UP TO +/- 20" W.G.
- SHOP PAINT IS ONE COAT OF DIRECT-TO-METAL ENAMEL, SERIES 55, COLOR (SWB55M101SHG) ULTRA GRAY @ 1-1 1/2 MILS D.F.T., EXT. SURFACES.
- AIR HEADER IS ALWAYS LOCATED AT 0 DEGREES.
- CLEAN AIR OUTLET CANNOT BE AT 0 DEGREES.
- ALL UNITS WILL HAVE LIFT-OFF ACCESS DOORS.
- A NEMA 4 SOLENOID BOX IS SUPPLIED. THE SOLENOID VALVES ARE PRE-WIRED TO THEIR RESPECTIVE TIMER OUTPUT TERMINALS. THE SOLENOID PORT IS PRE-CONNECTED TO ITS RESPECTIVE DIAPHRAGM VALVE RELIEF PORT USING POLY-FIELD TUBING.
- A TIMER & NEMA 4 TIMER BOX IS SUPPLIED AND SHIPPED LOOSE FOR FIELD LOCATING AND MTG. THE TIMER BOX REQUIRES 1 PH/60 HZ/115 VOLT ELECTRICAL CONNECTION.

REV.	DESCRIPTION	DATE BY
4/30/97	ARRANGEMENT II	MLD
<p>UPDATED: 4/30/97</p> <p>SERIAL: ARRANGEMENT II</p> <p>DRAWN BY: MLD</p> <p>CUSTOMER: GENERAL DIMENSIONS</p> <p>MODEL: BD 144 - 256 II TOP BAG REMOVAL</p> <p>DRAWING NUMBER: BD-144-256 II</p> <p>REV.: 0</p>		



ULTRA INDUSTRIES, INC.
1908 DE KOVEN AVE. RACINE, WI 53403
PHONE: 414-633-5070 FAX: 414-633-5172